

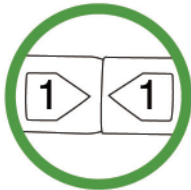
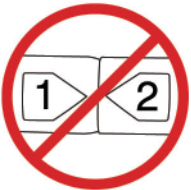
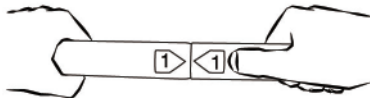
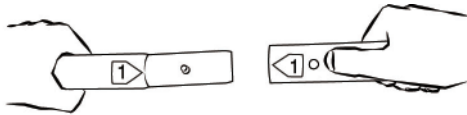
PARTS AND HARDWARE



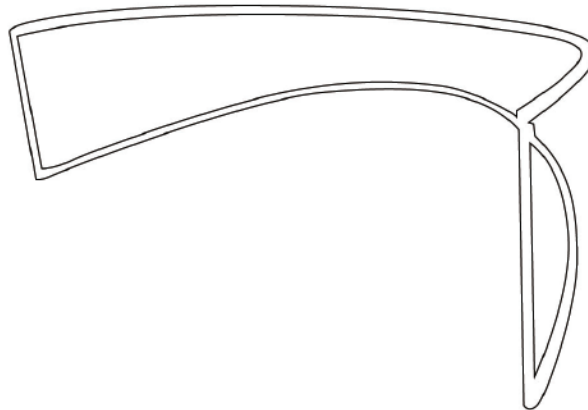
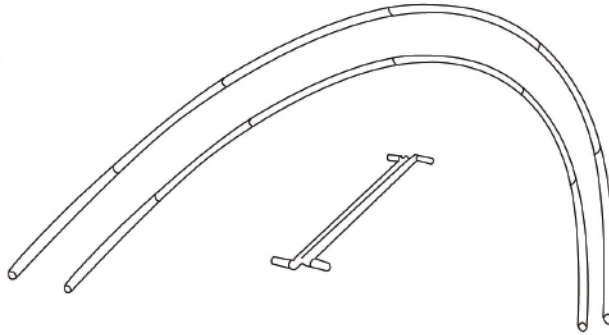
CAUTION: Before starting assembly, wear gloves to protect your hands.



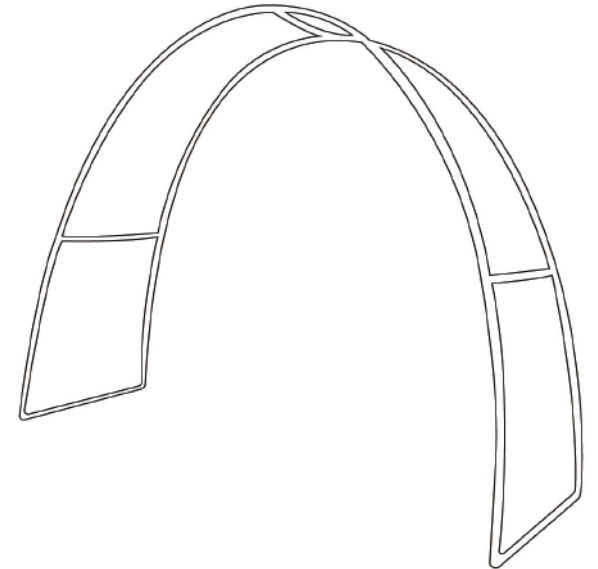
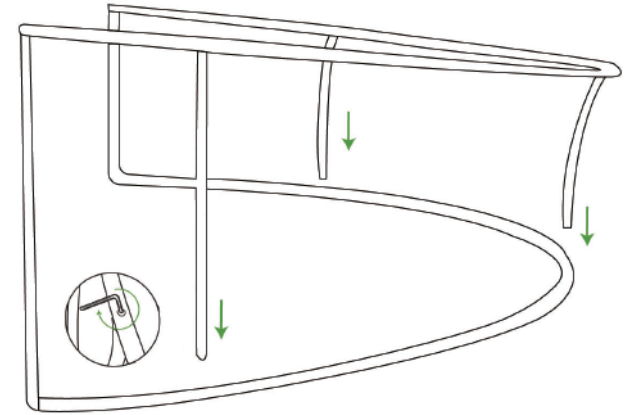
Connect tubes by matching the numbers on the ends.



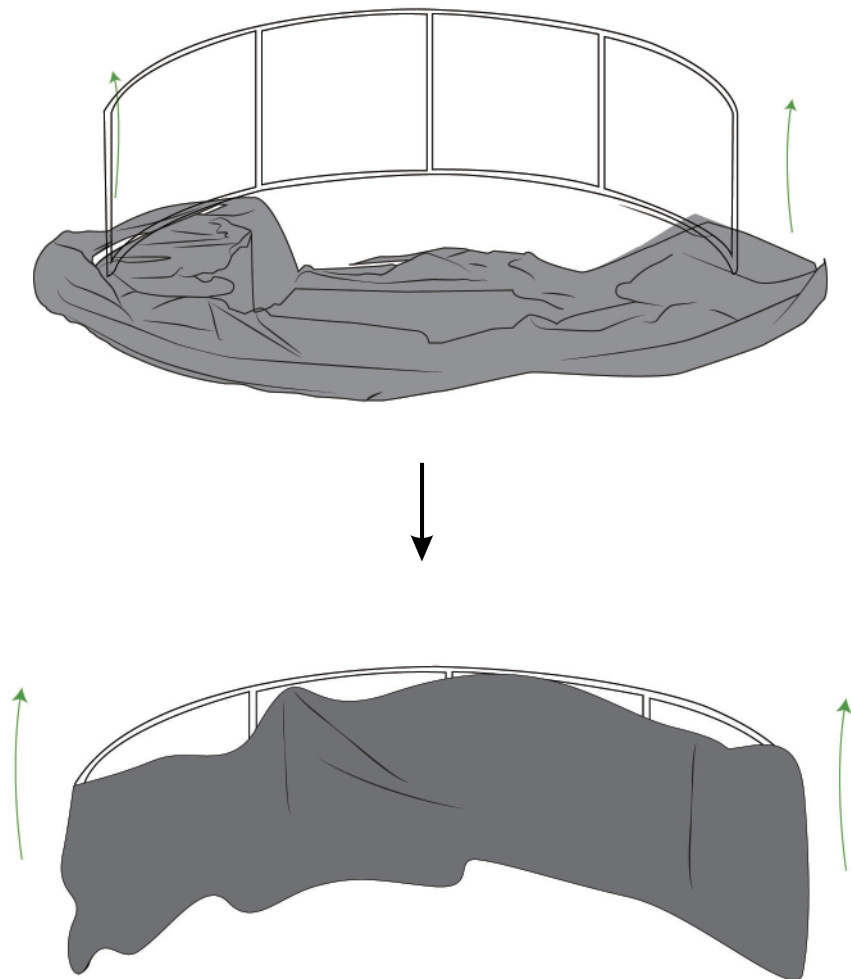
1. Snap and connect all curved tubes with matching labels to assemble 2 arches. Then use the 2 tubes with end connectors to connect 2 arches together at both ends.



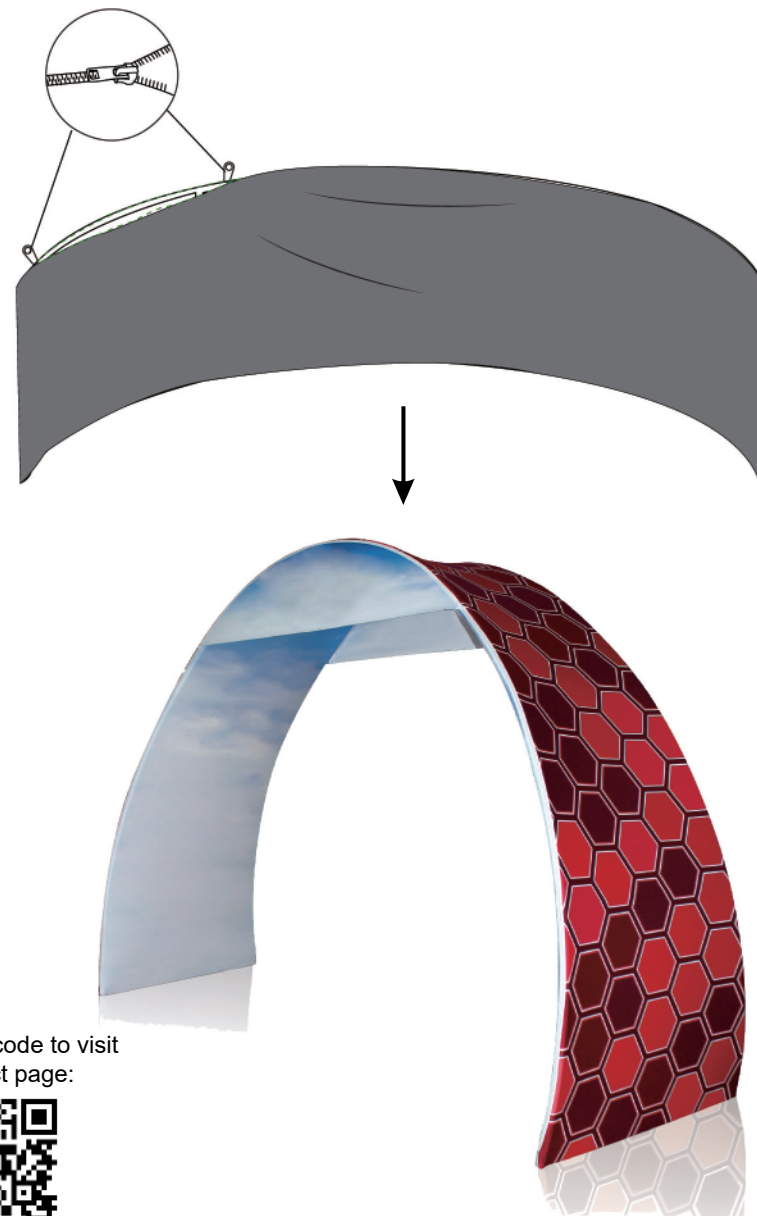
2. Assemble the 3 supporting tubes in the middle and fix them with screws using hex wrench to complete the arch frame.



3. Carefully lay down the assembled frame over the printed fabric. Drape the frame with fabric graphics as shown below.



4. Zip the fabric along the tubes on the opening edge. Secure the fabric where the 2 zippers meet. Stand the assembled frame to its upright position. The assembly is finished.



Scan QR code to visit the product page:



If you have any questions regarding our products, please visit us at www.displays2go.com or contact D2G customer service at 844-221-3388.